



**Coast to Cascades Community Wellness Network (CCCWN)  
Mental Health/Substance Use Disorder Regional Coalition  
Meeting Summary  
Held virtually – Microsoft Teams  
January 12, 2026  
10:30 a.m. – 11:10 a.m.**

**Participants:** Heidi May-Stoulil, Chair, Stephanie Dreiling, Jamie Freeman, Andy Hertel, Jolynn Meza Wynkoop, Nike Neuenheim, James Page, Benjamin Roe, Catherine Rupkus, David Simmons, M.D., Sheila Thompson, Blue Valentine, Tyler Watkins, Jesse Noble, Angela Hoak, Elizabeth Merritt, Lalori Lager, Rocio Munoz, Holly Drexler, Jef Van Arsdall, Suzie Beaupre, Traci Sackett, Michael Holder, Justin Thomas, Fred Edwards, and Sommer McLeish

**Welcome/Introductions:**

Heidi May-Stoulil, Chair, welcomed everyone to the meeting and led introductions.

**Meeting Minutes:**

The committee reviewed the minutes from the December 8, 2026, meeting of the Regional Mental Health/Substance Use Disorder Coalition. **Jesse Noble moved to approve the meeting minutes as presented, with Blue Valentine seconding. Members present unanimously approved the motion.**

**Presentation- Homie House:**

Tyler Watkins presented on new CBO in Toledo.

- General Awareness- we share with the community about how to impact youth
- Tyler is a veteran for 10 years and an ex-Lincoln County law enforcement officer
- Now works at the Middle and High Schools in Toledo
- Gets youth involved in athletics:
  - Youth are 80% less likely to get involved in substances if they participate in sports.
  - So far Home House has completed 520+ check-ins for youth since opening on 10/4/24
  - Each night we see 10-25 students
  - Provide food/meal nightly
  - Support for retention through structured classes (professional development), career transition, financial classes, and tutors
  - Discuss with students about plans for after high school and provide support

- Youth work on weekly goals with check-in which is particularly important (Tyler works at the schools and supports students during the day)
- Partners with the City of Toledo for youth to give back to the community through 10 hours a month in community service
- Provides food boxes on Mondays
- **100%** of students who are attending Homie House supports are on track to graduate
- Questions?
  - **Jef Van Arsdall**- Is there something like the Homie House in Benton County?  
**Tyler:** No, not really. Some youth have been in the system at MacLaren Youth Correctional Facility and Tyler supports them by monitoring/completing their required paper work and support them to avoid additional problems after release
  - Is Homie House only for Toledo students? **Tyler:** the best way to make a referral is through email right now. Transportation is our biggest barrier to supporting students outside of Toledo.
  - The age range that Homie House works with is 14-21 years old; it is rare for an agency to support students after they turn 18 years old.

**Health Resources and Services Administration (HRSA) Grant – Project - Nurturing Empowerment, eXcellence, and Transformation (NEXT) for Youth:**

Jolynn Meza Wynkoop provided a presentation on the HRSA Grant – Project NEXT.

- **About the Award-**
  - **HRSA Federal Office of Rural Health Policy (FORHP)**
  - **Program Name:** Rural Health Care Services Outreach Program (Outreach Program)
  - **TA Providers:** Georgia Health Policy Center (GHPC)
  - **Award Period:** 8/1/25- 7/31/29 (4 years)
  - **Award Amount:** \$1,000,000- awarded in 12-month increments (\$250,000)
- **Current Timeline-**
  - August 12, 2025- received notification of award
  - Updated NoA delayed during government shutdown
  - January 7, 2026- received NoA
  - Currently working on subaward contracts for partners
- Project NEXT Members will implement new and expand existing behavioral health services for youth and young adults (ages 12- 24) with Substance Use Disorder (SUD) and/or untreated Mental Health Conditions (MHC) in Lincoln County.
- The American Medical Association defines Behavioral Health as “mental health and substance use disorders, life stressors, and crises, and stress-related physical symptoms.”
- **Key Partners-**
  - Samaritan North Lincoln Hospital
  - Samaritan Pacific Communities Hospital
  - Lincoln County Health and Human Services
  - Lincoln County Community Justice (LCCJ)
- **Key Partner Responsibilities-**

- **Samaritan North Lincoln Hospital-** A project director (1.0 FTE) will be responsible for overseeing the implementation of the project including workplan monitoring, data collection and reporting, partner collaboration, and community outreach and engagement.
- **Samaritan Treatment and Recovery Services- Newport** A PSS (.5 FTE) will provide peer support services to young adult clients being served by STARTS-Newport and will provide targeted outreach to youth and young adults.
- **Lincoln County Health and Human Services-** A counselor (.25 FTE) will provide counseling services to youth at school-based health centers. A mental Health intervention Specialist (.25 FTE) will provide Botvin’s LifeSkills Training SUD prevention education curriculum to 10<sup>th</sup> graders in high need high schools.
- **Lincoln County Community Justice (LCCJ)-** Youth Tides Shelter located in the City of Newport will provide housing resources and basic needs to youth and young adults in crisis. Housing funds will be used for those in need who are not eligible or covered by other funding sources.
- **Project Goals-** The 4 project goals will support the overarching goal to improve the behavioral health and well-being of youth and young adults in rural Lincoln County by July 31, 2029
  - **Goal 1:** Expand the delivery of accessible evidence-based behavioral health services
  - **Goal 2:** Expand the delivery of behavioral health education and outreach
  - **Goal 3:** Expand access to safety net services and emergency housing
  - **Goal 4:** Develop and sustain innovative, multi-sectoral approaches to ensure the continued availability of grant-developed services.

Goal 1: Expand the delivery of accessible evidence-based behavioral health services for youth and young adults in Lincoln County by July 31, 2029.					
Objectives	Activities	Progress Measures	Outcomes Measures	Timeline	Persons Responsible
Increase access to mental health counseling through expanded integration into school-based health centers.	1a. Increase FTE of Clinical Counselor(s) to expand behavioral health intervention services into high school school-based health centers.	Counselor(s) identified, and FTE increased.	Increased number of counseling hours in the high schools.	Q1, Q2	LCHHS, PD
Increase access to peer support services for young adults with SUD and/or MHCs.	1b. Hire 0.5 FTE Peer Support Specialist (PSS) to provide peer support services to young adults at Coastal STARS.	PSS hired.	Increased number of young adults (ages 18-24) receive young adult-specific peer support services.	Q1, Q2	C-STARS, PD
	1c. Provide Counseling on Access to Lethal Means (CALM) and Mental Health First Aid (MHFA) Youth training to PSS.	PSS completes CALM and MHFA Youth training.	Decreased risk of suicide among youth and young adults.  Improved awareness and knowledge of mental health needs for youth and young adults.	Q1, Q2	C-STARS

Goal 2: Expand the delivery of behavioral health education and outreach for youth and young adults in Lincoln County by July 31, 2029.					
Objectives	Activities	Progress Measures	Outcomes Measures	Timeline	Persons Responsible
Provide Botvin's LifeSkills Training curriculum in high need high schools.	2a. Increase FTE of Mental Health Intervention Specialist to provide Botvin's LifeSkills Training in the high schools.	Mental Health Intervention Specialist identified, and FTE increased.	Established capacity to provide Botvin's LifeSkills Training to high school students.	Q1	LCHHS
	2b. Work with Lincoln County School District to identify high need high schools.	High schools identified.  Dates selected for curriculum to be implemented in the high schools.	Established agreement and plan in place between LCHHS and Lincoln County School District.	Q1	PD, LCHHS
	2c. Purchase Botvin's LifeSkills Training curriculum and materials.	Purchase orders submitted.	Botvin's LifeSkills training curriculum and materials procured.	Q1, Q5, Q9, Q13	PD, LCHHS
	2d. Implement Botvin's LifeSkills Training in identified schools.	Number of schools receiving curriculum.  Number of classes receiving curriculum.  Number of high school students receiving curriculum.	Improved self-management, social, and drug resistance skills among high school youth.	Q2-Q16	LCHHS
Expand behavioral health outreach to youth and young adults.	2e. PD and PSS meet quarterly to plan for outreach opportunities to be conducted in the community.	Number of meetings.  Dates of meetings.  Number of outreach events and activities planned.	Improved coordination of outreach activities.	Q1-Q16	PD, PSS
	2f. Purchase supplies, materials, snacks, meals, and other items necessary for youth and young adult outreach activities.	Number of supplies, materials, snacks/meals, and other items purchased.	Increased engagement during outreach activities for youth and young adults.	Q1-Q16	PD, PSS
	2g. Provide CALM and MHFA Youth training to PD.	PD completes CALM and MHFA Youth training.	Improved awareness and knowledge of mental health needs for youth and young adults.	Q2	PD
	2h. PSS to engage in outreach activities in the community.	Number of outreach activities engaged in.	Strengthened community partnerships through collaboration and involvement.	Q1-Q16	PSS
	2i. PD to engage in community outreach and education efforts involving the health and wellbeing of youth and young adults.	Number of community outreach and education efforts involved in.	Strengthened community partnerships through collaboration and involvement.	Q1-Q16	PD

**Goal 3: Expand access to safety net services and emergency housing for youth and young adults in crisis in Lincoln County by July 31, 2029.**

Objectives	Activities	Progress Measures	Outcomes Measures	Timeline	Persons Responsible
Increase access to shelter and safety net support services to youth and young adults.	3a. Provide resource navigation, emergency housing, and basic needs for youth and young adults in crisis.	Number of youth/young adults supported through resource navigation.  Number of youth/young adults supported through emergency housing.  Number of youth/young adults supported through basic needs services.	Expanded access to shelter and safety net support services.	Q1-Q16	PD, LCCJ

**Goal 4: Develop and sustain innovative, multi-sectoral approaches to ensure the continued availability of grant supported services in Lincoln County by July 31, 2029.**

Objectives	Activities	Progress Measures	Outcomes Measures	Timeline	Persons Responsible
Establish formal grant project infrastructure to meet required deliverables.	4a. Formalize Project NEXT membership; execute subaward agreements and/or contracts.	Subawards are signed.  MOUs and/or contracts in place.	Established partnerships and infrastructure required to carry out services effectively.	Q1	PD, LCHHS, SNLH, SPCH – C-STARs, LCCJ
	4b. Develop four-year strategic plan.	Strategic plan developed and submitted.	Completed detailed and robust strategic plan.	Q1-Q4	PD, Project NEXT Members & CCCWN
	4c. Develop assessment plan.	Assessment plan developed and submitted.	Completed detailed and robust assessment plan.	Q1-Q3	PD
	4d. Develop sustainability plan.	Sustainability plan developed and submitted.	Completed detailed and robust sustainability plan.	Q1-Q16	PD, Project NEXT Members & CCCWN
Provide effective communication about consortium activities and behavioral health services to key stakeholders and community members throughout the project period.	4e. Convene monthly Project NEXT meetings to guide project coordination.	Number of meetings conducted.  Dates of meetings conducted.  Number of NEXT members in attendance.	Strengthened member relationships and communication related to Project NEXT.	Q1-Q16	PD, LCHHS, SNLH, SPCH – C-STARs, LCCJ
	4f. PD will work with Project NEXT members to ensure required data is collected and reported accurately.	Number of meetings between the PD and NEXT members.	Accurate and detailed data reports.	Q1-Q16	PD, LCHHS, SNLH, SPCH – C-STARs, LCCJ
	4g. Provide copies of federally required reports to the Project NEXT members, Regional MH/SUD Coalition, CCCWN Steering Committee and full CCCWN.	Number of reports submitted.  Dates the reports are submitted to each group/coalition.	Informed local and regional partners.	Q1-Q16	PD, Consortium Director
Identify and coordinate resources and funding to ensure behavioral health services and supports for youth and young adults are sustained beyond the project period.	4h. Develop funding streams to support ongoing service delivery activities.	Number of funding streams identified.  Names of funding streams identified.	Improved and increased access to behavioral health services for youth and young adults.	Q1-Q16	PD, LCHHS, SNLH, SPCH – C-STARs, LCCJ, CCCWN
	4i. Support activities to ensure consortium is sustained to support ongoing coordination and cooperation between members.	Number of meetings	Improved relationships and cooperation between members.	Q1-Q16	PD, LCHHS, SNLH, SPCH – C-STARs, LCCJ, CCCWN
	4j. Provide MHFA Youth training to community members who work with youth.	25 community members complete MHFA Youth training.	Increase understanding of and ability to respond to youth mental health concerns and crises.	Q1-Q4	PD, Area Health Education Center Director

- **Reporting Requirements-**
  - Annually: Federal Financial Report
  - 2/2/26: Assessment Plan

- 7/15/26: 4-year Strategic Plan
- **Next Steps-**
  - Ongoing planning meetings with project partners
  - Execute subaward agreements with project partners
- **Questions?**
  - **Traci Sackett-** Can you share these slides with us? **Jolynn:** Yes! Who's responsible for the HRSA reporting? **Jolynn:** PD submits reports and collects the data for the reports from the partners
  - **Fred-** Is this grant like the HIWAY grant? **Jolynn:** Project NEXT is 4 years where HIWAY was 3-year grant. The new grant has more money included, but it focuses on behavior health for students through a counselor.
  - **Jesse Noble-** Will this grant include the charter schools? **Jolynn:** In the beginning phases we are to determine which schools will be involved in Project NEXT. More to come on this.
  - **Traci:** This will focus on one school in the first year, correct? **Jolynn:** Yes, we are starting these talks and more to come.

#### **Addressing Violence in Rural Oregon Communities (AVIROC) Grant:**

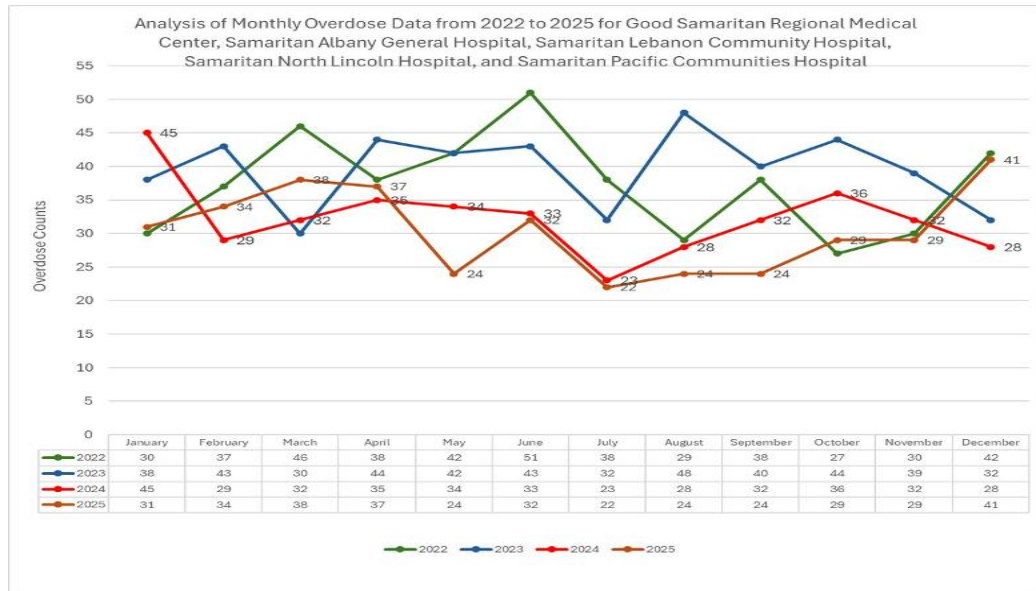
Sommer McLeish shared information regarding Behavior Over Time Activity- Tomorrow, Tuesday, January 13<sup>th</sup> at 1pm during our monthly Partners for Health meeting, technical assistants from Georgia Health Policy Center will be facilitating an activity called Behavior Over Time. We are inviting those who work with survivors of violence of domestic violence, child abuse, and human trafficking to join us to share their expertise in the trends they are noticing from their perspective. We hope this will help us see the trends that might reflect contributing factors, subpopulations, outcomes, etc. and help us tell a story about these violence in our region and how to support survivors.

#### **Update – Regional Overdoses:**

Discussions followed around regional overdoses.

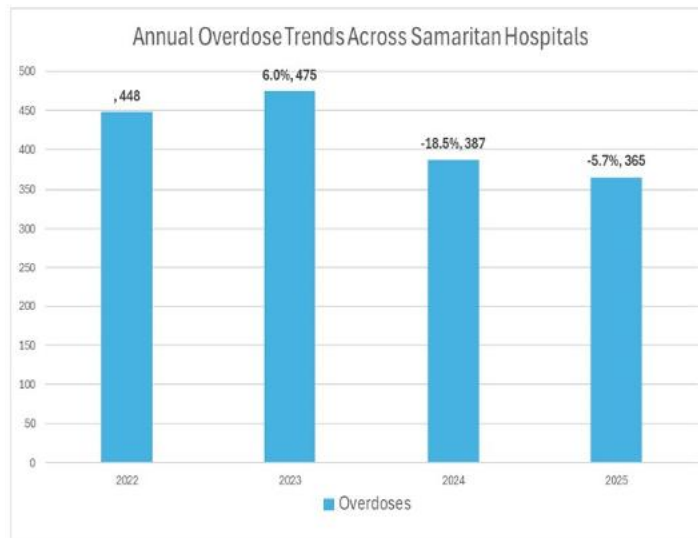
- **Nike Neuenheim, Samaritan Health Services Report** – Reported information from the Samaritan Health Services (SHS) Analysis of Monthly Overdose Data from 2022 through 2025 for Good Samaritan Regional Medical Center, Samaritan Albany General Hospital, Samaritan Lebanon Community Hospital, Samaritan North Lincoln Hospital, and Samaritan Pacific Communities Hospital; Annual Overdose Trends Across Samaritan Hospitals; Analysis of Monthly NAS/NOWS Data from 2022-2025 for Good Samaritan Regional Medical Center, Samaritan Albany General Hospital, Samaritan Lebanon Community Hospital, Samaritan North Lincoln Hospital, and Samaritan Pacific Communities Hospital; Annual NAS/NOWS Trends Across Samaritan Hospitals
  - **Analysis of Monthly Overdose Data from 2022 through 2025 for Good Samaritan Regional Medical Center, Samaritan Albany General Hospital, Samaritan Lebanon Community Hospital, Samaritan North Lincoln Hospital, and Samaritan Pacific Communities Hospital:**

- Shows a decrease annually in overdoses; chart shows the data but does not include the ‘why.’

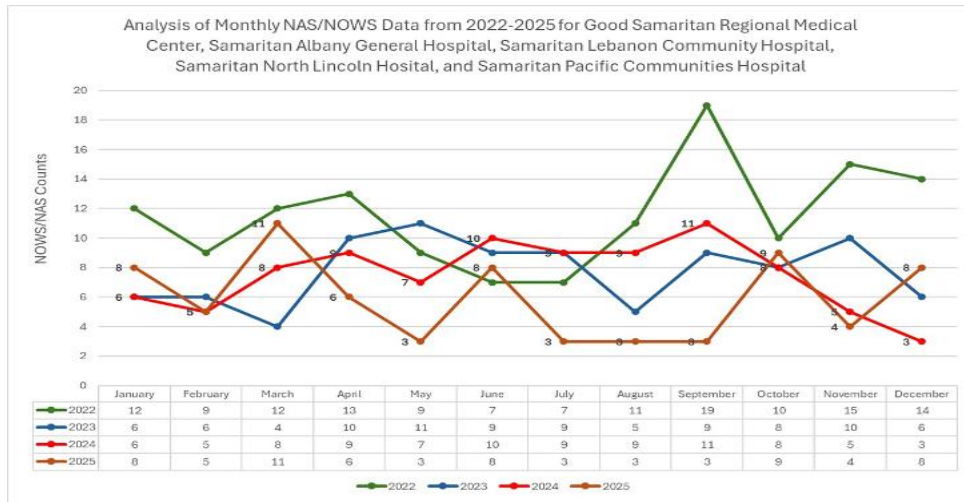


○ **Annual Overdose Trends Across Samaritan Hospitals-**

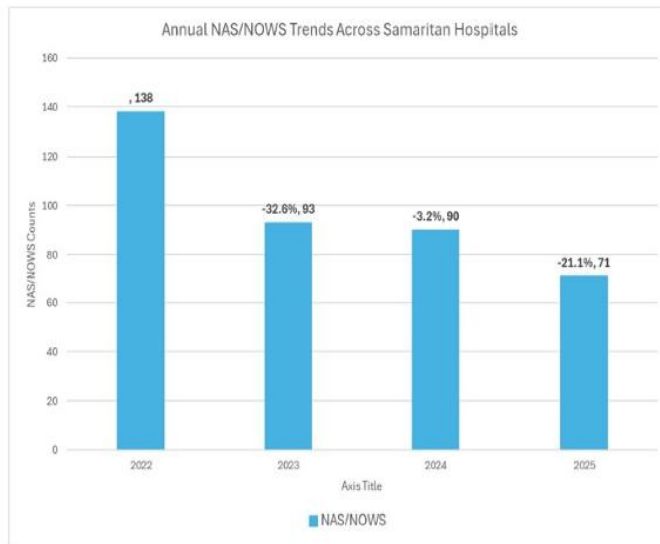
- Jesse- Can you clarify what substances are included in these counts.
- Nike- Great question- will find out the answer and follow up with the group
- Others- this information is usually gathered from a patient’s diagnosis and not share what the substance is



- **Analysis of Monthly NAS/NOWS Data from 2022-2025 for Good Samaritan Regional Medical Center, Samaritan Albany General Hospital, Samaritan Lebanon Community Hospital, Samaritan North Lincoln Hospital, and Samaritan Pacific Communities Hospital.**
  - **NAS (Neonatal Abstinence Syndrome)**- Neonatal abstinence syndrome conditions result from newborns withdrawal from certain substances that they were exposed to before birth.
  - **NOWS (Neonatal Opioid Withdrawal Syndrome)**- is a subset of NAS and is specific to opioid withdrawal during the first 28 days of life (CDC)



- **Annual NAS/NOWS Trends Across Samaritan Hospitals-**
  - Decrease in NAS and NOW counts.



*\*The meeting minutes have been updated to clarify that the graph titles include all five Samaritan hospitals; the data in the graphs remain unchanged.*

- **Nike checks in with the group on how do we want to use these graphs for our work?** Attendees are asked to follow up with Nike with any direction on how data is presented or how we can include ‘why’
- **James-** wants to know which substances and what referrals folks are getting after they exit the hospital.
- **Jef-** does the group want data from law enforcement still? The group concluded that they do want law enforcement data to help fill in gaps where patients are getting treatment through first responders rather than going to the hospital.
- **Jesse-** can share her data, but it will be a week behind at these meetings since the data is being generated weekly during these meetings, so will have to share the previous week’s data; can only share an overview of the data rather than exact numbers due to the small size of the data and community.
- **The group** agreed that collecting data from SHS, Law Enforcement, and public health to hopefully show the overall trends and compare data.

**Behavioral Health Resource Networks (BHRN) Update:**

The meeting has run to time and updates regarding BHRN will be shared via email; Thien is out of the office at this time; Benton County stated they didn’t have any updates for BHRN.

**Partner Updates/Additional Business/Announcements:**

Jesse stated that there is a concern with social media challenges for children who are overdosing on children’s Benadryl. There have been reports of youth overdosing on Benadryl in Lincoln County. Please reach out to Jesse if you have any information to share because she wants to stop this before it gets worse.

**Adjourn:**

With no further business to discuss, adjourned the meeting at 11:33 a.m.

Respectfully submitted,  
Sommer McLeish  
Grants and Sponsored Programs

*(These meeting minutes are the true and accurate record of the meeting.)*